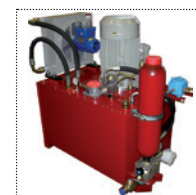
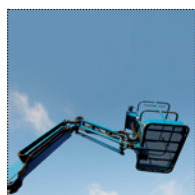


TUBI TERMOPLASTICI SERIE OL7

Da 70 bar a 250 bar

THERMOPLASTIC HOSES OL7 SERIES

From 70 bar to 250 bar - From 1015 psi to 3625 psi



Caratteristiche tecniche dei tubi serie OL7 con rinforzo tessile conformi o superiori alla norma SAE 100R7
Technical features of the OL7 series hoses with textile reinforcement meeting or exceeding SAE 100R7 standard

Riferimento	Ø				Pressione a 23°C <i>Pressure at 23°C</i>		Pressione <i>Pressure</i>		Raggio <i>Radius</i>		Peso g/m	Peso lbs/ft	Codice Boccola
	interno inch.	interno mm.	external inch.	esterno mm.	Scoppio min. bar	Scoppio min. psi	Esercizio max. bar	Esercizio max. psi	Curvatura min. mm.	Curvatura min. inch.			
<i>Reference</i>	<i>internal inch.</i>	<i>internal mm.</i>	<i>external inch.</i>	<i>external mm.</i>	<i>min. Burst bar</i>	<i>min. Burst psi</i>	<i>Working max. bar</i>	<i>Working max. psi</i>	<i>min. Bend mm.</i>	<i>min. Bend inch.</i>	<i>Weight g/m</i>	<i>Weight lbs/ft</i>	<i>Ferrule Code</i>
OL710000	1/8"	3.5	0.335	8.5	920	13340	230	3335	25	0.98	57	0.038	BP18R7
OL78940000	5/32"	4.0	0.35	8.9	1000	14500	250	3625	25	0.98	58	0.039	BP532R7
OL720000	3/16"	4.8	0.394	10.0	840	12180	210	3045	30	1.18	73	0.049	BP316R7
OL730000	1/4"	6.4	0.465	11.8	800	11600	200	2900	35	1.38	90	0.060	BP14R7
OL740000	5/16"	8.0	0.563	14.3	760	11020	190	2755	45	1.77	128	0.086	BP516R7V
OL750000	3/8"	9.7	0.63	16.0	700	10150	175	2537	55	2.17	155	0.104	BP38R7V
OL760100	1/2"	13.0	0.799	20.3	560	8120	140	2030	75	2.95	219	0.147	BP12R7V
OL770100	5/8"	16.0	0.925	23.5	420	6090	105	1522	120	4.72	277	0.186	BP58R7
OL780100	3/4"	19.2	1.043	26.5	360	5220	90	1305	145	5.71	330	0.222	BP34R7
OL790100	1"	25.6	1.28	32.5	280	4060	70	1015	200	7.87	403	0.271	BP1R7

Caratteristiche tecnico-costruttive:

Anima interna in poliestere termoplastico, rinforzo in fibra poliestere e rivestimento esterno in poliuretano antiabrasione stabilizzato ai raggi UV e resistente ai microrganismi, a richiesta microperforato per passaggio aria e gas compatibili.

Applicazioni:

Le tubazioni della serie OL7 sono state create per uso oleodinamico a media pressione.

Temperature di utilizzo:

Da -40°C a +100°C Da -40°F a +212°F
 Per aria, acqua e fluidi a base acquosa la temperatura massima di esercizio è + 70°C. (+158°F)

Pressioni d'esercizio:

Rapporto di sicurezza 1:4

Valore max. di vuoto:

-0,93 bar; 700 mm Hg

Specifiche:

Tubazioni conformi o superiori alle norme SAE J517 sez. SAE 100R7 - UNI EN 855 - ISO 3949.

Technical-constructive features:

Internal core in thermoplastic polyester, reinforcement in polyester fiber, exterior covering in antiabrasion polyurethane stabilized to UV rays and resistant to micro-organisms; on request it is also available in micro perforated version for air and compatible gas.

Applications:

The OL7 series hoses have been created for hydraulic use at medium pressure.

Utilization temperature:

*From -40°C to +100°C From -40°F to +212°F
 Max. working temperature of air, water and fluids containing water: + 70°C. (+158°F)*

Working pressure:

Safety ratio 1:4.

Vacuum Rating:

-13,5 psi; 27,5 inch Hg

Specifications:

These hoses meet or exceed standards SAE J517 sec. SAE 100R7 - EN 855 - ISO 3949.