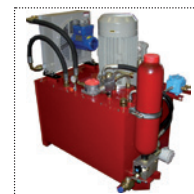
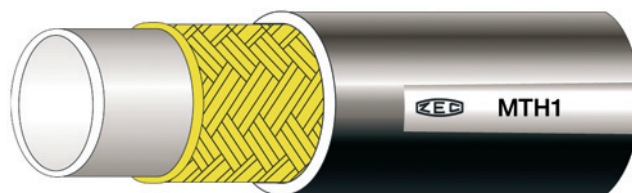
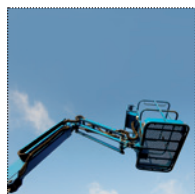


TUBI TERMOPLASTICI SERIE MTH1

Da 70 bar a 325 bar

THERMOPLASTIC HOSES MTH1 SERIES

From 70 bar to 325 bar - From 1015 psi to 4710 psi



Caratteristiche tecniche dei tubi serie MTH1 con treccia in acciaio conformi o superiori alle pressioni della norma SAE 100R1
Technical features of the MTH1 series hoses with steel braid meeting or exceeding SAE 100R1 standard pressures

Riferimento	Ø				Pressione a 23°C Pressure at 23°C		Pressione Pressure		Raggio Radius		Peso g/m	Peso lbs/ft	Codice Boccola
	interno inch.	interno mm.	external inch.	esterno mm.	Scoppio min. bar	Scoppio min. psi	Esercizio max. bar	Esercizio max. psi	Curvatura min. mm.	Curvatura min. inch.			
Reference	internal inch.	internal mm.	external inch.	external mm.	min. Burst bar	min. Burst psi	Working max. bar	Working max. psi	min. Bend mm.	min. Bend inch.	Weight g/m	Weight lbs/ft	Ferrule Code
MTH120000	3/16"	4.8	0.394	10.0	1300	18550	325	4710	30	1.18	133	0.089	BP316R7
MTH130000	1/4"	6.4	0.469	11.9	1200	17400	300	4350	40	1.57	170	0.114	BP14MT1
MTH140000	5/16"	8.0	0.551	14.0	960	13920	240	3480	50	1.97	221	0.149	BP516R7V
MTH150000	3/8"	9.7	0.630	16.0	900	13050	225	3262	60	2.36	260	0.175	BP38R7V
MTH160000	1/2"	13.0	0.756	19.2	760	11020	190	2755	75	2.95	326	0.219	BP12R7V
MTH170000	5/8"	16.3	0.917	23.3	600	8700	150	2175	110	4.33	412	0.277	BP58R7
MTH180000	3/4"	19.2	1.003	25.5	520	7540	130	1885	150	5.91	454	0.305	BP34R1
MTH190000	1"	25.6	1.280	32.5	420	6080	105	1520	185	7.28	590	0.396	BP1R7
MTH1100000	1"1/4"	32.0	1.574	40.0	280	4060	70	1015	290	11.41	886	0.595	BP114JC7

Caratteristiche tecnico-costruttive:

Anima interna in poliestere termoplastico, rinforzo in treccia acciaio ad alta resistenza e rivestimento esterno in poliuretano antiabrasione stabilizzato ai raggi UV e resistente ai microrganismi, a richiesta microperforato per passaggio aria e gas compatibili.

Applicazioni:

Le tubazioni della serie MTH1 sono state create per uso oleodinamico ad alta pressione.

Temperature di utilizzo:

Da -40°C a +100°C Da -40°F a +212°F

Per aria, acqua e fluidi a base acquosa la temperatura massima di esercizio è +70°C. (+158°F)

Pressioni d'esercizio:

Rapporto di sicurezza 1:4

Valore max. di vuoto:

-0,93 bar; 700 mm Hg

Specifiche:

Tubazioni conformi o superiori alle pressioni delle norme SAE 100R1 - EN 853 1ST, 1SN - EN 857 1SC.

Technical-constructive features:

Internal core in thermoplastic polyester, reinforcement in high tensile steel braid, exterior covering in antiabrasion polyurethane, stabilized to UV rays and resistant to micro-organisms; on request it is also available in micro perforated version for air and compatible gas.

Applications:

The MTH1 series hoses have been created for hydraulic use at high pressure.

Utilization temperature:

From -40°C to +100°C From -40°F to +212°F

Max. working temperature of air, water and fluids containing water: +70°C. (+158°F)

Working pressure:

Safety ratio 1:4

Vacuum Rating:

13,5 psi; 27,5 inch Hg

Specifications:

These hoses meet or exceed standards SAE 100R1 - EN 853 1ST, 1SN - EN 857 1SC pressures.