

# MHP 80

FIELD SERVICE & MOBILE WORKSHOP  
HAND PUMP, PORTABLE



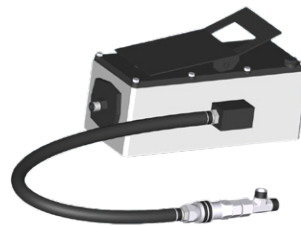
## KEY FEATURES

- Compact
- Lightweight
- Easy to use
- Balanced design
- Dual stage pump
- 1" Die Set included

## OPTIONAL



Maintenance Kits



Hydro-pneumatic Pump

## TECHNICAL SPECIFICATIONS

<b>CRIMP RANGE</b> 4 - 43 mm (0.157 - 1.693")	<b>DIMENSIONS</b> 330 x 250 x 400 mm (13 x 10 x 16")
<b>CRIMP FORCE</b> 80 t	<b>PACKAGING</b> 800 x 600 x 830 mm (31 x 24 x 33")
<b>OPENING WITH DIES</b> +20 mm (+0.787")	<b>NET WEIGHT</b> 28 kg (62 lb)
<b>COMPLETE OPENING</b> 59 mm (2.323")	<b>GROSS WEIGHT</b> 41 kg (90 lb)
<b>MASTER DIE LENGTH</b> 56 mm (2.205")	<b>TECHNICAL FEATURES</b> Hand pump: 5000 psi (double speed)
<b>STANDARD DIES</b> 15, 18, 21, 24, 27, 30, 39	

HOSE AND FITTINGS SELECTION		
HOSE TYPE	FITTING TYPE	MAX HOSE SIZE
2 WIRE BRAID & TEXTILE	MF2000 MULTIFIT; MF3000 OPK; MF3000 OPF	1"
3 WIRE (1 BRAID + 2 SPIRAL)	MF2000 MULTIFIT	½"
4 WIRE SPIRALS	MF2000 MULTIFIT; MF3000 OPK	½"